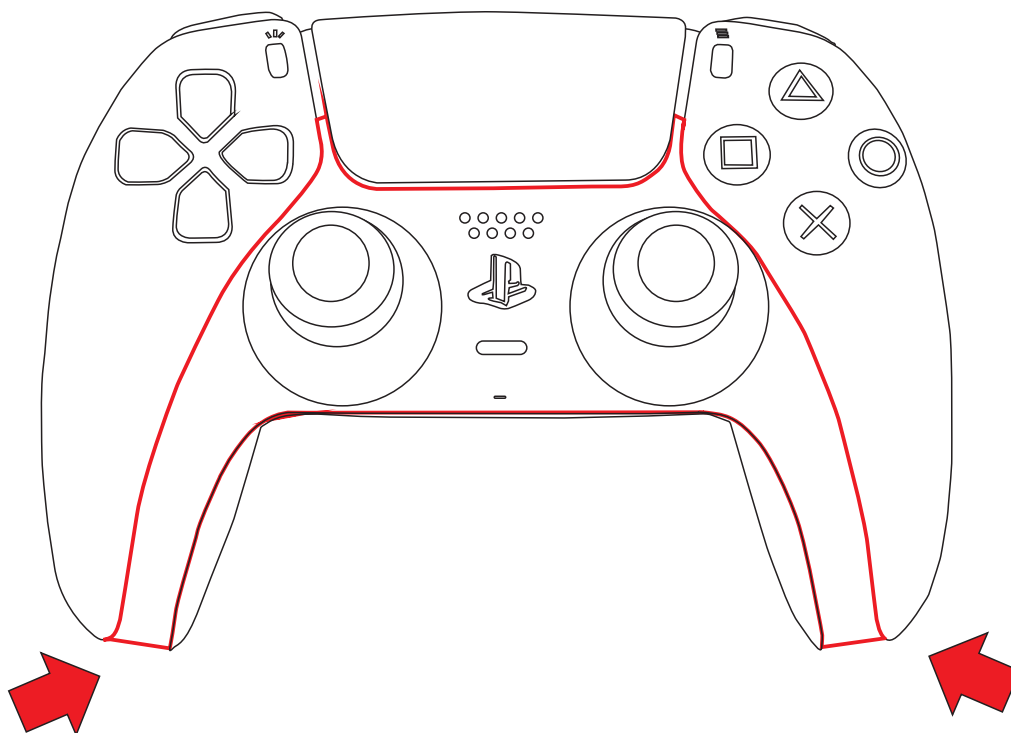
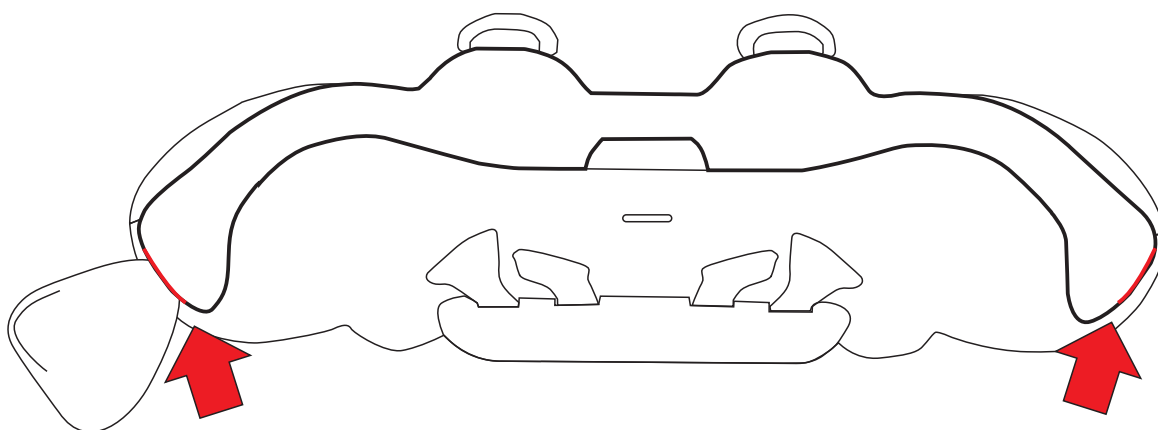


MINI FRONT REMOVAL

STEP 1



INSERT THE THIN PLASTIC TOOL INTO THE FITTING CREASE



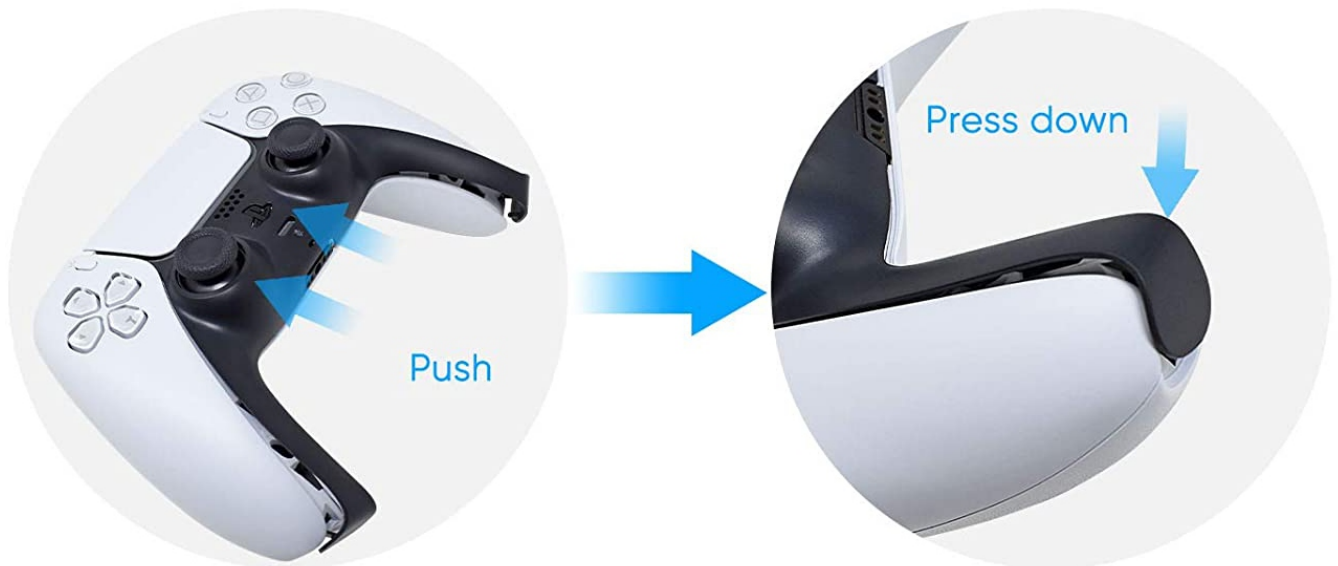
IN THE FORCE UP SEQUENCE

EXAMPLE

DISASSEMBLE



INSTALLATION



L1/R1 REMOVAL METOD

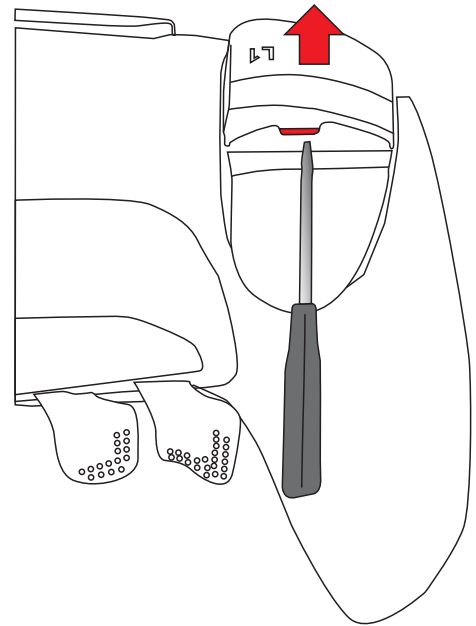
STEP 1

PRESS BUTTON



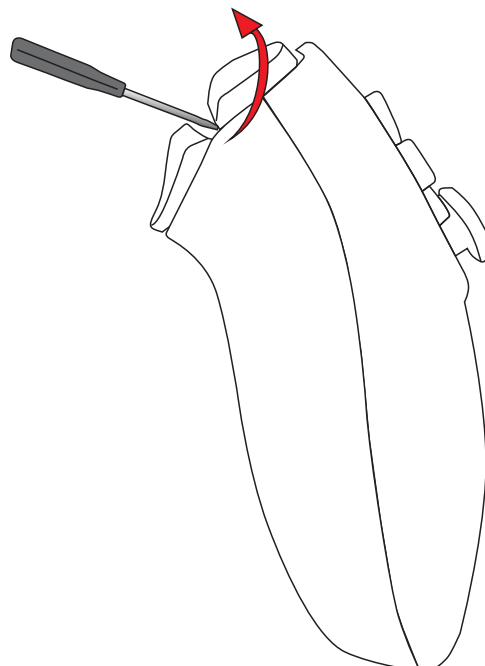
STEP 2

PUT THE REMAP KEY IN THE BRAND AREA



STEP 3

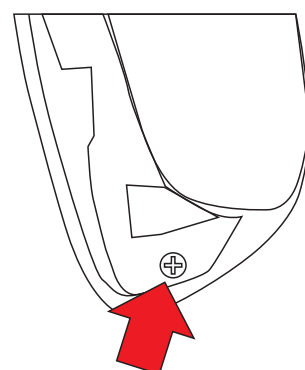
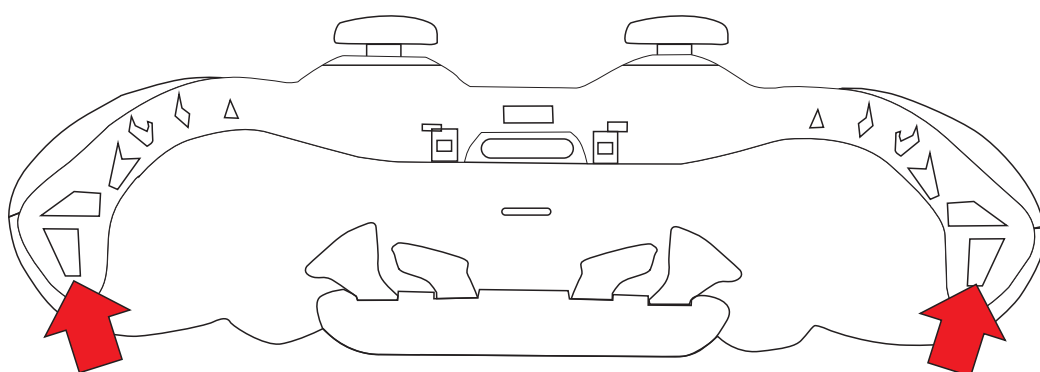
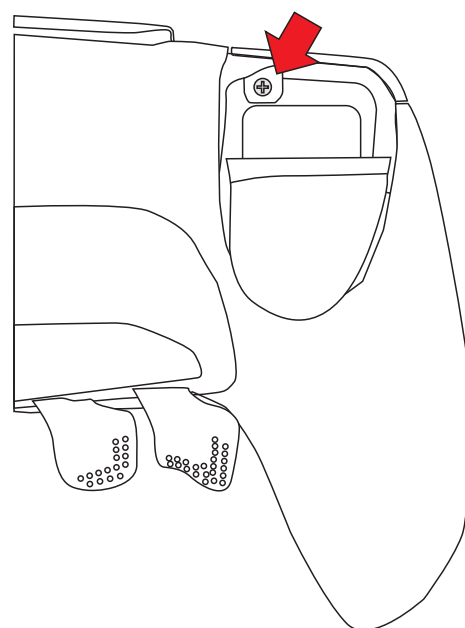
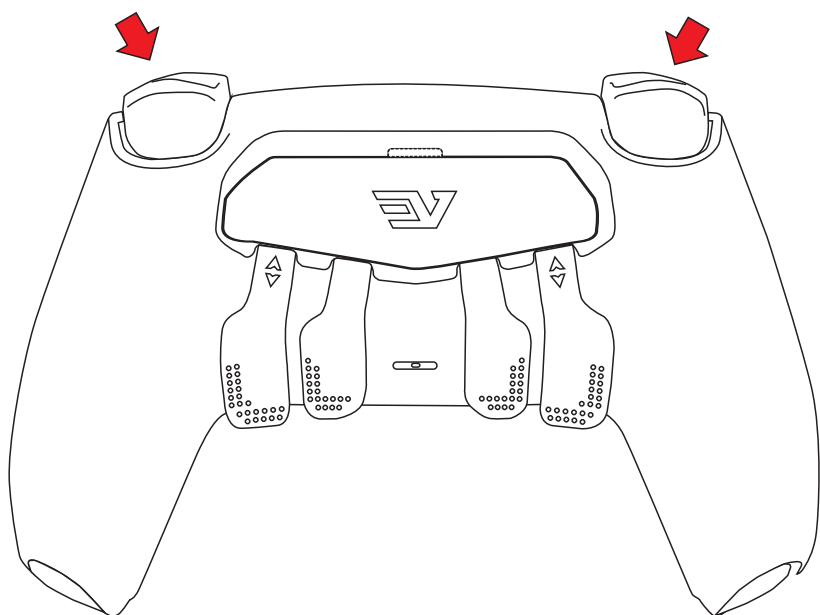
FORCE THE KEY FOR UP



REMOVE THE FOUR SCREWS

STEP 1

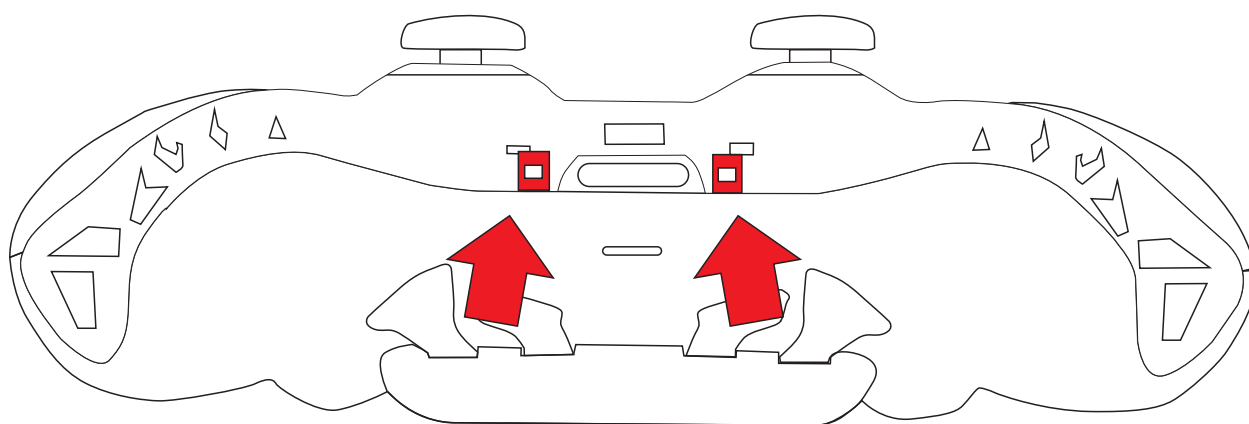
«WITH R1 AND L1 REMOVED»
LOCATE THE 2 TOP SCREWS ON
THE CONTROLLER AND REMOVE



REMOVE BACK SHELL

STEP 1

RELEASE THE LOCKS



STEP 2

REMOVE BACK SHELL

